

AVX250 & 1000M



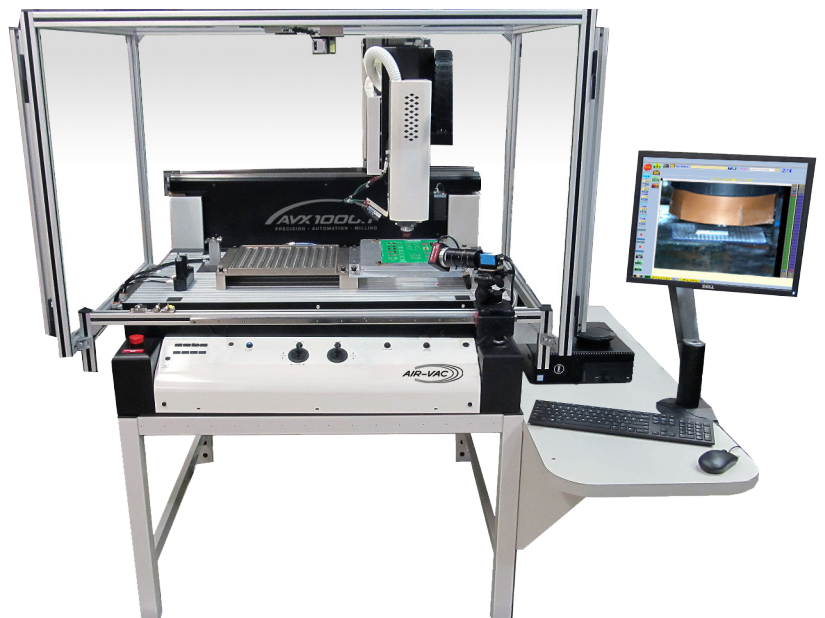
Automated, High Precision Component Milling/Removal without Heat

UNDERFILLED | NON-UNDERFILLED | HEAT SENSITIVE ASSEMBLIES



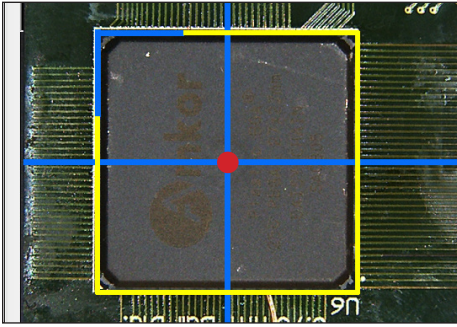
Key Features

- **Automatic Laser Height Measurement** for board and component.
- **Automatic Vision Align** (model based).
- **Board Scanning** (on-machine) a board image is created and used for process development.
- **Automatic Tool Length and Tool Changing Measurement.**
- **Automatic Component Locating** using Digital Camera with motorized zoom and focus.
- **Direct-View Camera** for monitoring setup and process activity.
- **Universal Fixture** holds boards flat and securely.
- **Vacuum-Based Debris Removal** (on-machine) and Fume Extraction System.
- **Powerful, User-Friendly Software.**

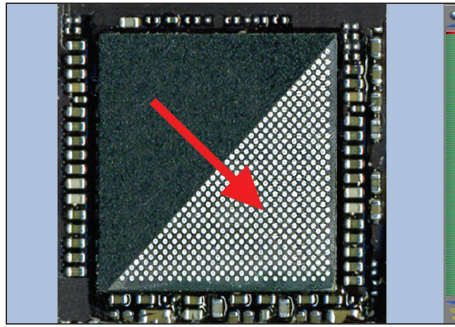


Machine Enclosure provides operator safety with door sensor/interlocks, and a Welded Workstation provides for a stable work environment.

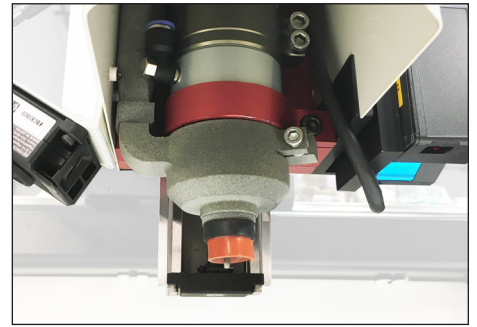
Automatic Multi-Point Laser Measurement. Measures board and components height distance.



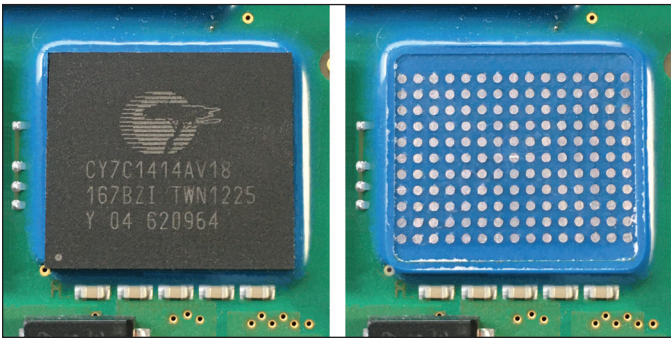
Flexible, Easy-To-Use Software including Virtual Milling. Milling patterns created for any part.



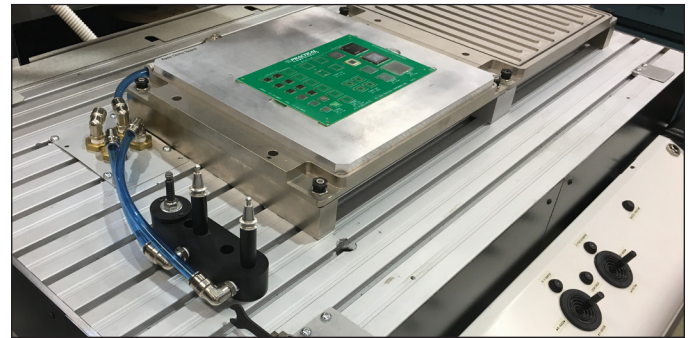
Advanced Cutting Tools, Side and Down View Cameras, Laser Sensor, Vacuum Removal System.



High Precision Milling, Zero Adjacent Clearance for Underfilled Components without using heat.



Universal Board Carrier for PCB Assemblies, Auto Tool Changer, Touch Probe and Front Panel Controls.



(AVX1000M shown above)

All AVX Standard Milling Machines include:

- **Automatic Component Locating** using Digital Camera with Motorized Zoom and Focus
- **Milling Head Assembly**
- **Laser Height Measurement System** for Board and Component
- **Vacuum-Based Debris Removal** (On-Machine)
- **Board Scanning** (On-Machine)
- **Auto Tool Changing & Tool Length Measurement**
- **PC with 19" Monitor**
- **Machine Enclosure with Safety Lockout System**
- **Static Eliminator System**
- **Particle/Dust Collection System, Hepa Filter**
- **Direct View Camera System**
- **Tooling/Milling Starter Kit**
- **Welded Workstation**
- **Universal Fixture**
- **One (1) Custom Fixture**
- **Spare Parts Kit**

AVX1000M General Specifications:

- **Maximum Board Size:** 24" x 32"
- **Machine Dimensions:** 40"W x 40"D x 65"H
- **Enclosure Dimensions:** 50"W x 50"D x 70"H

AVX250 General Specifications:

- **Maximum Board Size:** 10" x 18"
- **Machine Dimensions:** 36"W x 34"D x 41"H
- **Enclosure Dimensions:** 46"W x 52"D x 54"H

Contact Air-Vac for more detailed information and video demonstrations.



Air-Vac Engineering Company, Inc.
 Seymour, CT • 203.888.9900 | Carlsbad, CA • 760.438.9363
air-vac-eng.com